

La Habra Town Center

SEC Whittier Blvd / Beach Blvd

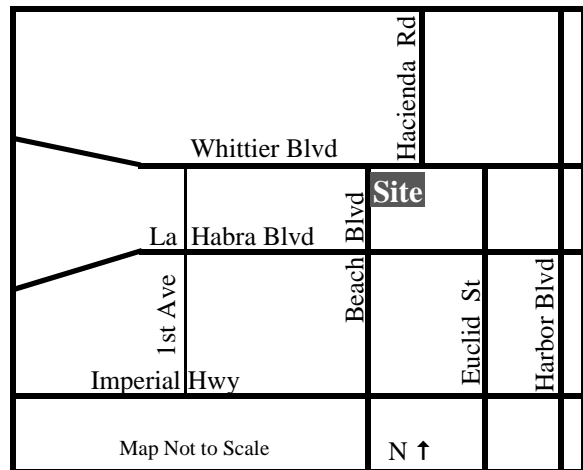
La Habra, CA



Pad Space for Lease

- 1,708 Sq. Ft. +/-
- Ideal for food / restaurant with adjacent outside patio area
- Anchor: Albertsons
- Feature Tenants: Starbucks Coffee, Quiznos Subs, Coldstone Creamery, Union Bank of California

DEMOGRAPHICS:	1 Mile	2 Mile	3 Mile
Population:	21,966	76,744	139,098
Avg HH Income:	\$79,198	\$77,786	\$84,179



David Morgan
 (949) 585-7603 Phone
 (949) 585-7630 Fax
 dmorgan@repcommercial.com

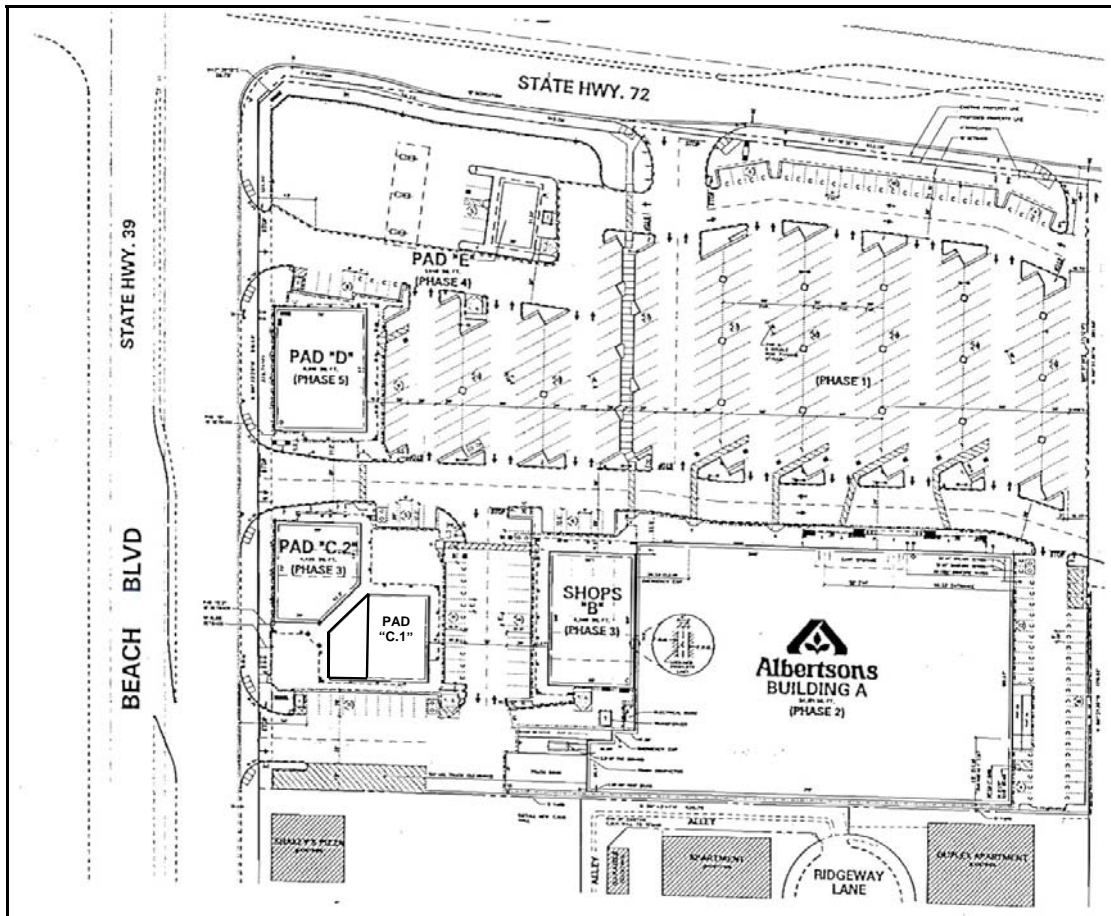
No warranty or representation, expressed or implied, is made as to the accuracy of the information contained herein, and is submitted subject to errors, omissions, change of price, rental or other conditions, withdrawal without notice, and to any listing conditions imposed by our principals.

Visit our website at: www.repcommercial.com

La Habra Town Center

SEC Whittier Blvd / Beach Blvd

La Habra, CA



<u>Suite</u>	<u>Tenant</u>	<u>Suite</u>	<u>Tenant</u>
Anchor	Albertsons	1900	Quizno's Sub
1810	Star Nails	1910	Chinese Restaurant
1820	LA Weight Loss	1920	Available 1,708 Sq Ft. +/-
1830	Vitals Touch Spa & Salon	1930	Dentist
1840	Mail Box Exchange	1940	Cold Stone Creamery
1850	Cleaners	1950	Starbucks Coffee
		PAD	Union Bank of California



David Morgan
 (949) 585-7603 Phone
 (949) 585-7630 Fax
 dmorgan@repccommercial.com

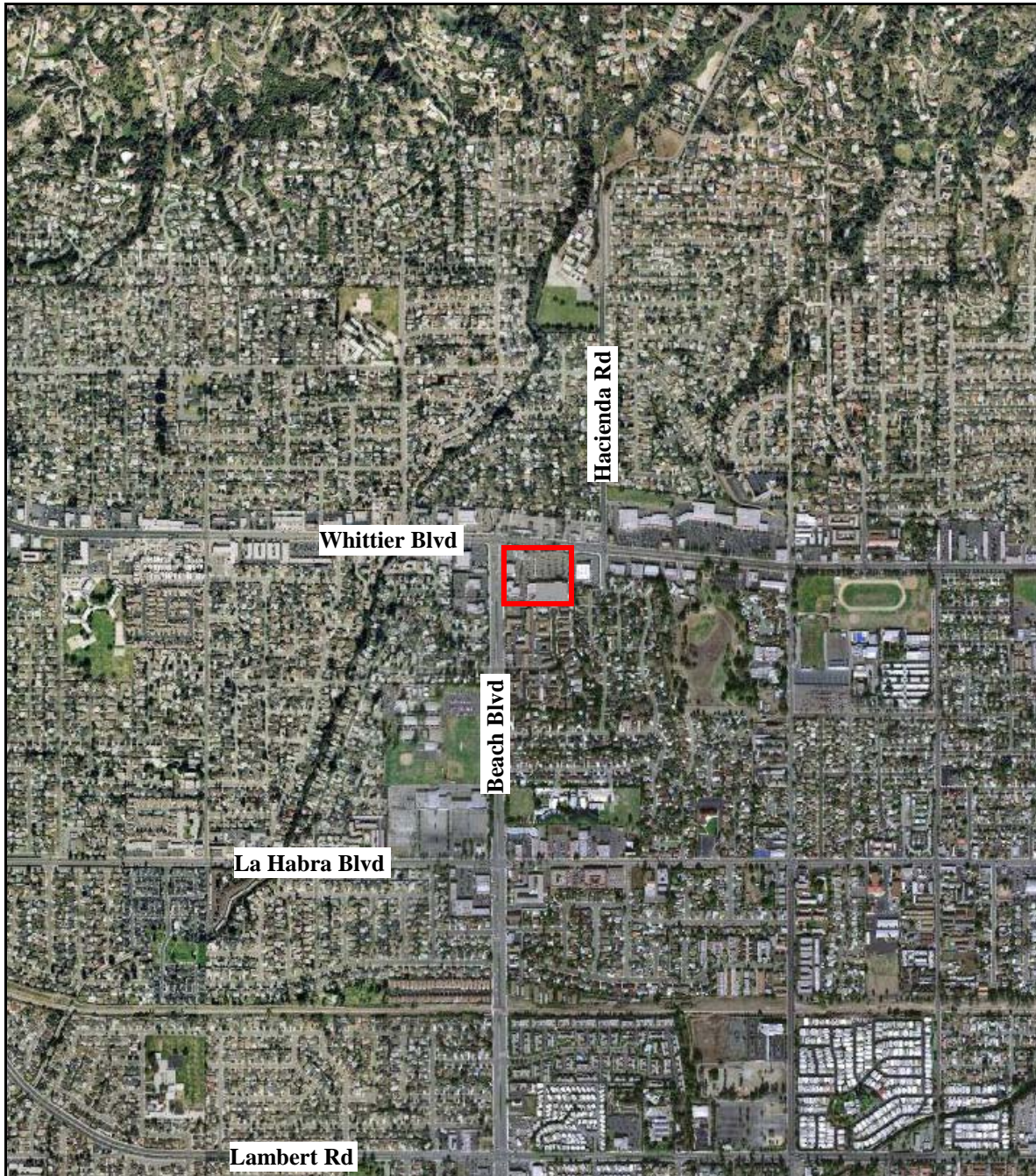
No warranty or representation, expressed or implied, is made as to the accuracy of the information contained herein, and is submitted subject to errors, omissions, change of price, rental or other conditions, withdrawal without notice, and to any listing conditions imposed by our principals.

Visit our website at: www.repccommercial.com

La Habra Town Center

SEC Whittier Blvd / Beach Blvd

La Habra, CA



David Morgan
(949) 585-7603 Phone
(949) 585-7630 Fax
dmorgan@repcommercial.com

No warranty or representation, expressed or implied, is made as to the accuracy of the information contained herein, and is submitted subject to errors, omissions, change of price, rental or other conditions, withdrawal without notice, and to any listing conditions imposed by our principals.

Visit our website at: www.repcommercial.com

Pop-Facts: Demographic Quick Facts Report

LA HABRA TOWN CENTER

Radius 1: W WHITTIER BLVD AT N BEACH BLVD, LA HABRA, CA 90631, aggregate

Radius 2: W WHITTIER BLVD AT N BEACH BLVD, LA HABRA, CA 90631, aggregate

Radius 3: W WHITTIER BLVD AT N BEACH BLVD, LA HABRA, CA 90631, aggregate

Description	0.00 - 1.00 miles		0.00 - 2.00 miles		0.00 - 3.00 miles	
	Radius 1	%	Radius 2	%	Radius 3	%
Population						
2012 Projection	22,637		79,103		143,877	
2007 Estimate	21,966		76,744		139,098	
2000 Census	21,567		74,927		134,938	
1990 Census	19,444		67,972		120,832	
Growth 1990 - 2000	10.92%		10.23%		11.67%	
Households						
2012 Projection	7,130		25,119		46,351	
2007 Estimate	7,064		24,773		45,333	
2000 Census	7,184		24,880		44,919	
1990 Census	6,968		24,148		42,177	
Growth 1990 - 2000	3.10%		3.03%		6.50%	
2007 Est. Population by Single Classification Race						
	21,966		76,744		139,098	
White Alone	14,986	68.22	49,549	64.56	84,531	60.77
Black or African American Alone	366	1.67	1,327	1.73	2,238	1.61
American Indian and Alaska Native Alone	208	0.95	697	0.91	1,161	0.83
Asian Alone	1,047	4.77	5,120	6.67	18,613	13.38
Native Hawaiian and Other Pacific Islander Alone	55	0.25	160	0.21	296	0.21
Some Other Race Alone	4,229	19.25	16,208	21.12	25,907	18.62
Two or More Races	1,075	4.89	3,684	4.80	6,351	4.57
2007 Est. Population Hispanic or Latino						
	21,966		76,744		139,098	
Hispanic or Latino	10,399	47.34	38,527	50.20	61,038	43.88
Not Hispanic or Latino	11,567	52.66	38,218	49.80	78,060	56.12
2007 Tenure of Occupied Housing Units						
	7,064		24,773		45,333	
Owner Occupied	4,764	67.44	15,798	63.77	31,983	70.55
Renter Occupied	2,300	32.56	8,976	36.23	13,350	29.45
2007 Average Household Size						
	3.05		3.06		3.04	



Pop-Facts: Demographic Quick Facts Report

LA HABRA TOWN CENTER

Radius 1: W WHITTIER BLVD AT N BEACH BLVD, LA HABRA, CA 90631, aggregate

Radius 2: W WHITTIER BLVD AT N BEACH BLVD, LA HABRA, CA 90631, aggregate

Radius 3: W WHITTIER BLVD AT N BEACH BLVD, LA HABRA, CA 90631, aggregate

Description	0.00 - 1.00 miles		0.00 - 2.00 miles		0.00 - 3.00 miles	
	<i>Radius 1</i>	%	<i>Radius 2</i>	%	<i>Radius 3</i>	%
2007 Est. Households by Household Income	7,064		24,773		45,333	
Income Less than \$15,000	612	8.66	2,154	8.69	3,444	7.60
Income \$15,000 - \$24,999	607	8.59	2,257	9.11	3,594	7.93
Income \$25,000 - \$34,999	610	8.64	2,244	9.06	3,784	8.35
Income \$35,000 - \$49,999	941	13.32	3,495	14.11	6,004	13.24
Income \$50,000 - \$74,999	1,394	19.73	5,067	20.45	8,929	19.70
Income \$75,000 - \$99,999	1,032	14.61	3,397	13.71	6,490	14.32
Income \$100,000 - \$149,999	1,294	18.32	4,074	16.45	8,409	18.55
Income \$150,000 - \$249,999	409	5.79	1,490	6.01	3,382	7.46
Income \$250,000 - \$499,999	108	1.53	391	1.58	892	1.97
Income \$500,000 and over	59	0.84	205	0.83	404	0.89
2007 Est. Average Household Income	\$79,198		\$77,786		\$84,179	
2007 Est. Median Household Income	\$63,683		\$61,037		\$66,351	
2007 Est. Per Capita Income	\$25,840		\$25,282		\$27,582	

